

Climatic characteristics on Siberian territory  
in the second half of XX century:  
observations and reanalysis based statistical  
analysis

*Shulgina T., Genina E., Gordov E.*

Institute of Monitoring of Climatic and Ecological Systems SB RAS,  
Siberian Center for Environmental Research and Training, Tomsk

E-mail: [stm@scert.ru](mailto:stm@scert.ru); [gordov@scert.ru](mailto:gordov@scert.ru); [genina@scert.ru](mailto:genina@scert.ru)



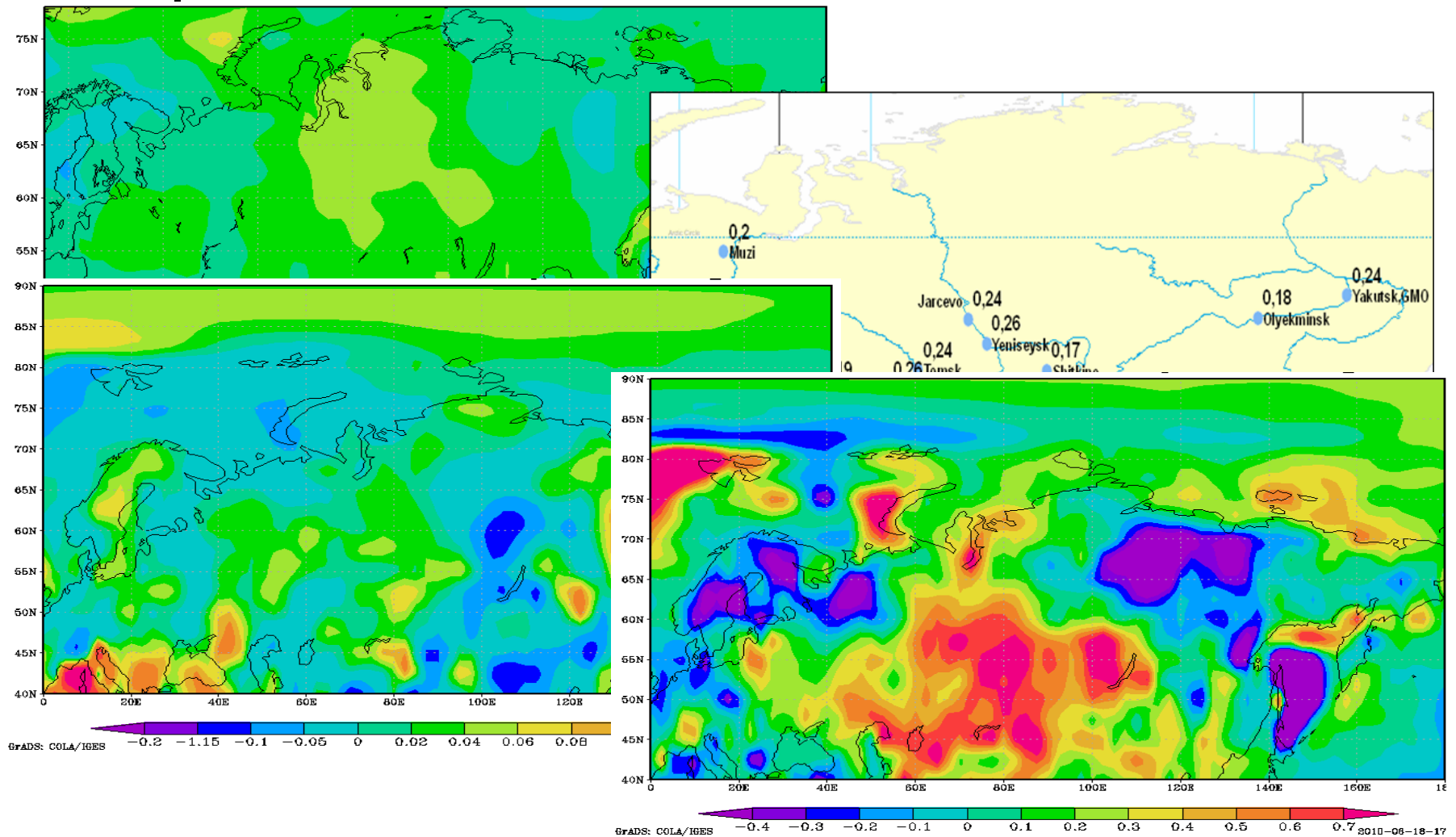
## *The main purpose*

- To investigate air temperature behavior over Siberian territory in terms of following climatic characteristics:
- Averaged characteristics:
    - Annual, seasonal and monthly mean temperature;
    - Duration of warm period;
  - Climate extreme indices:
    - Number of frost and summer days, number of tropical nights;
    - Daily temperature range and intra-annual extreme temperature range.

## *Data*

- ECMWF ERA-40 Reanalysis with spatial resolution  $2,5^{\circ} \times 2,5^{\circ}$  for time range from 1958 to 2000;
- Observations of 16 meteorological stations, which located on Siberian territory, for time period from 1958 to 2000.

# Results



**Fig.2.** Trend of daily temperature range and intra-annual extreme temperature range based on ECMWF ERA-40 Reanalysis data ( $^{\circ}\text{C}/\text{year}$ ) and station data ( $^{\circ}\text{C}/10$  years) over Siberian territory, 1958 - 2000



Thank you for your attention!