

**NUMERICAL EXPERIMENTS
ON THE SIMULATION
OF ATMOSPHERE CIRCULATIONS
INDUCED BY SOLAR RADIATION
OVER COMPLEX TERRAIN**

Pyanova E. A.

*Institute of Computational Mathematics and Mathematical
Geophysics of SB RAS, Novosibirsk,
pianova@ngs.ru*

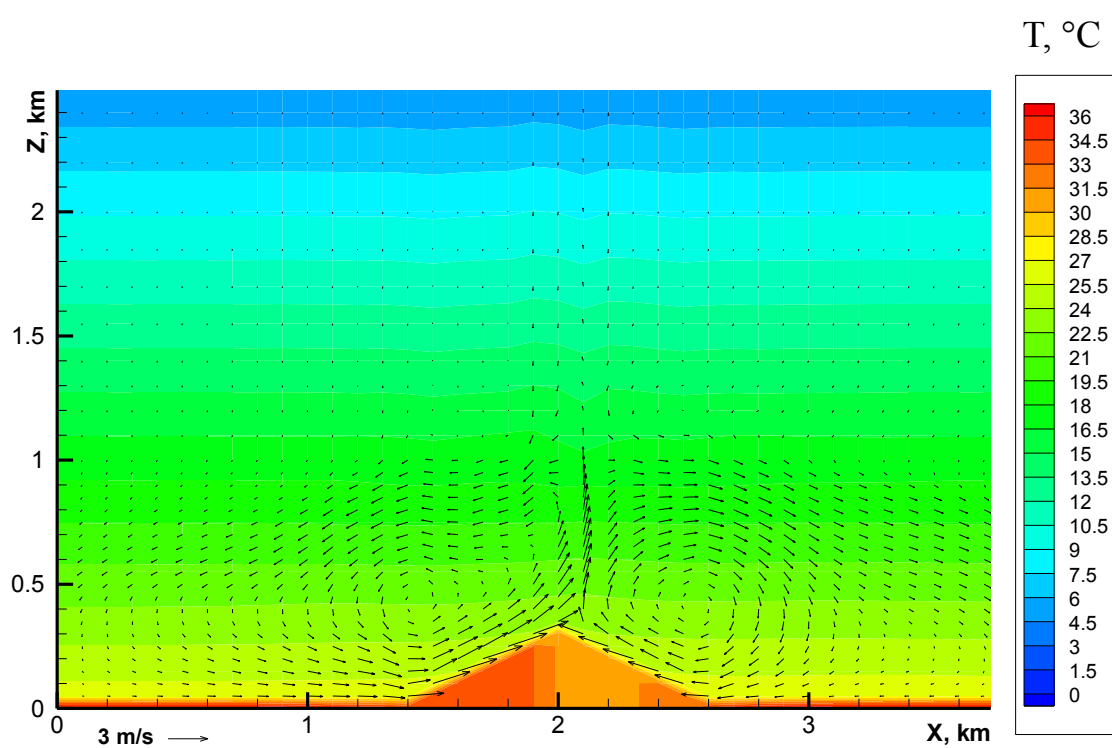


Figure 1. Two-dimensional vertical section of wind velocity and absolute temperature fields at $y=2$ km (day circulation at $t=13$ h).

Figure 2. Two-dimensional vertical section of wind velocity and passive pollutant concentration fields at $x=2.5$ km (evening circulation at $t=21$ h). The coordinates of the point pollutant sources are $\{x=2.5$ km, $y=1.1$ km, $z=500$ m $\}$ and $\{x=2.5$ km, $y=3.9$ km, $z=400$ m $\}$.

