

Analysis of spatial variability of net primary production for oligotrophic mire using space images

Golovatskaya E.A., Dukarev E.A.

Institute of monitoring of climatic and ecological
systems SB RAS

golovatskaya@imces.ru

Key area «Bakcharskoe bog»

Longitude :

82° 09' 54.57" E

82° 11' 17.58" E

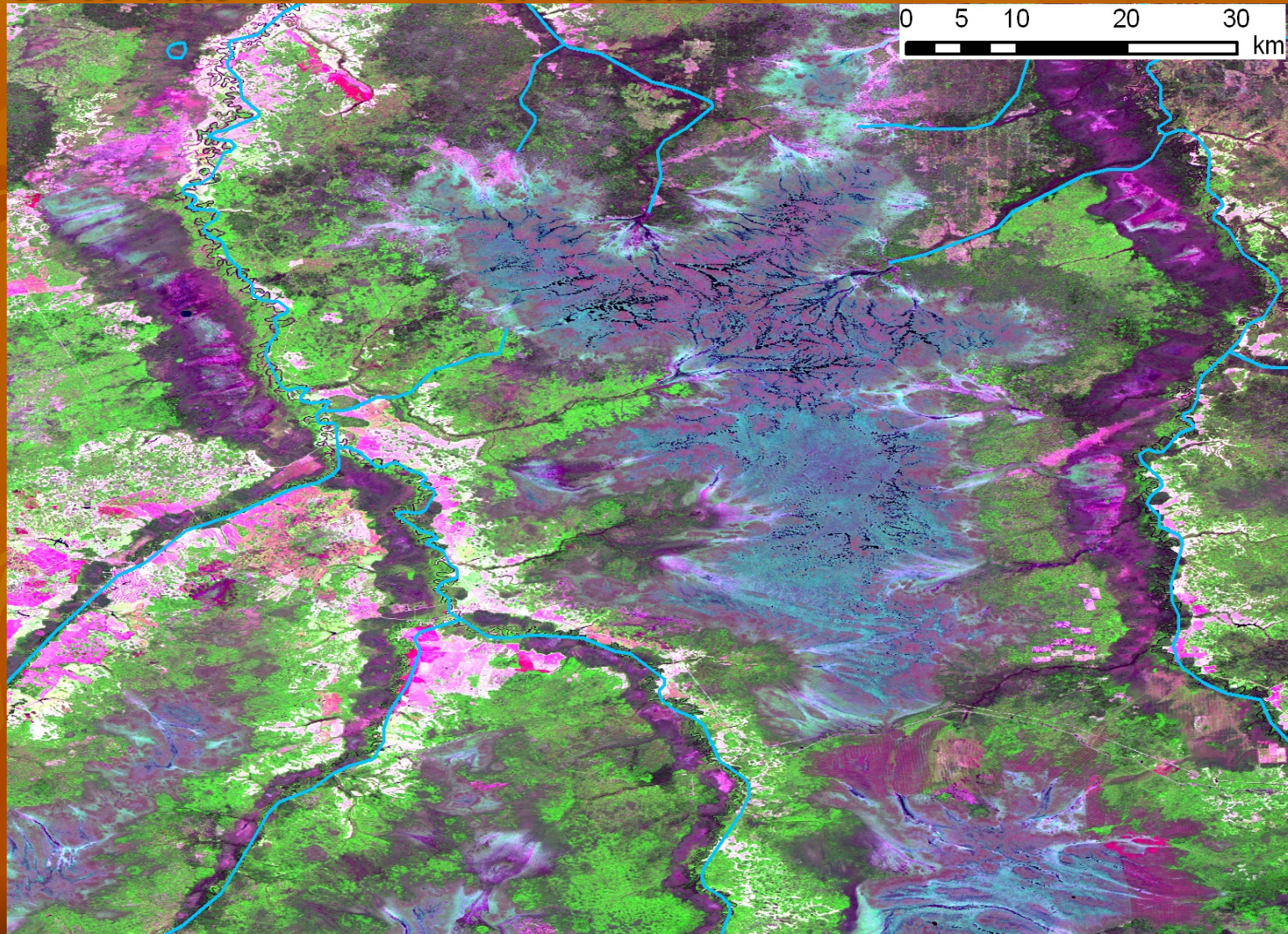
Latitude :

57° 01' 10.10" N

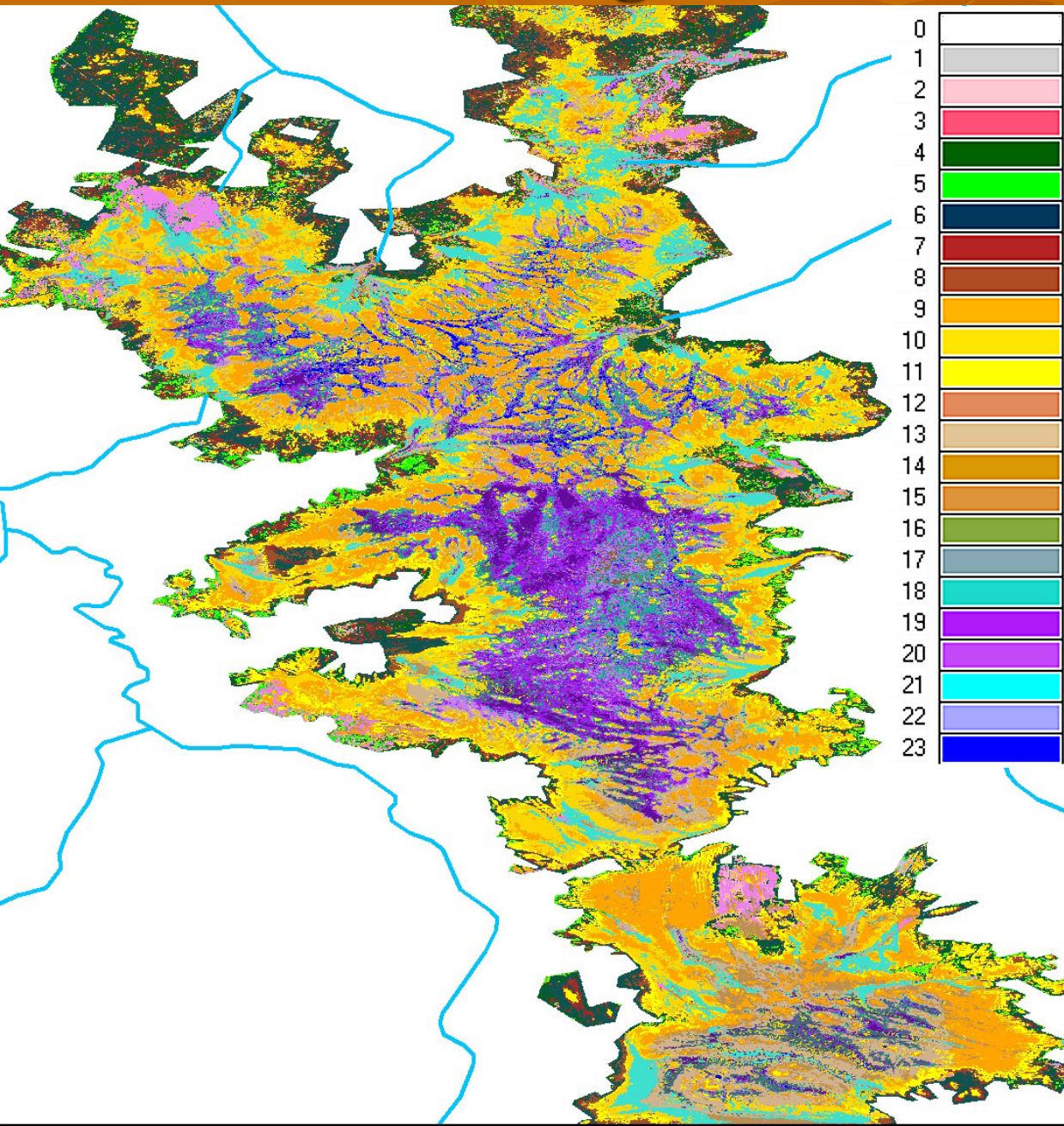
57° 00' 23.23" N

Area:

586 556 ha

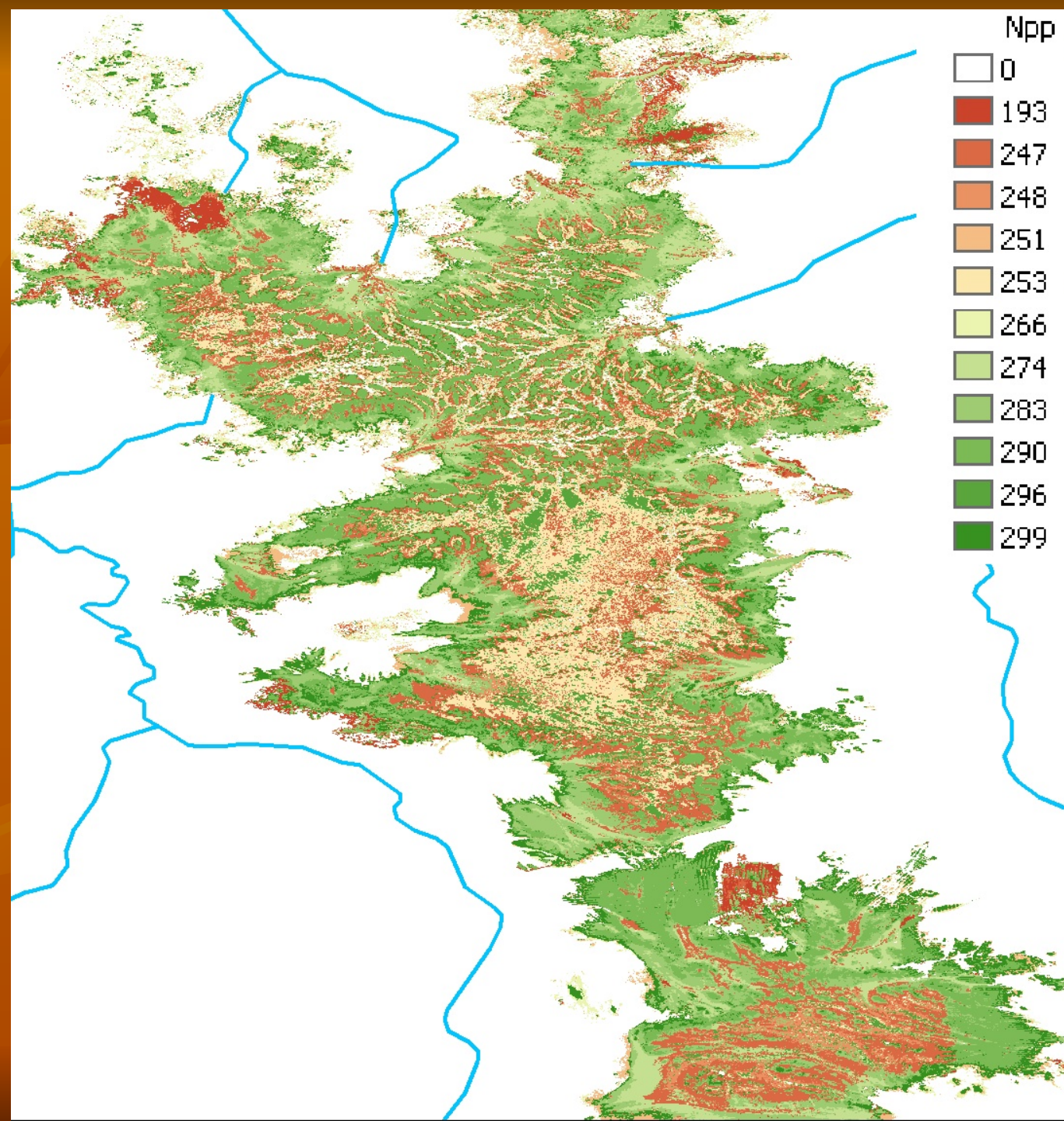


Bakcharskoe bog. Classification results.



0	
1	
2	
3	
4	
5	
6	
7	
8	
9	
10	
11	
12	
13	
14	
15	
16	
17	
18	
19	
20	
21	
22	
23	

	S, ha	%
Tall ryam	6 481	4,67
Tall wet ryam	7 285	5,25
Sparse ryam	16 892	12,17
Ryam- hollow complex	26 230	18,89
Low ryam 1	19 939	14,36
Low ryam 2	4 427	3,19
Rich-hollow complex 1	10 362	7,46
Rich-hollow complex 2	1 617	1,17
Sphagnum open bog	2 925	2,11
Rich-hollow complex 3	4 045	2,91
Rich-hollow complex 4	8 499	6,12
Rich-hollow complex 5	5 164	3,72
Rich-hollow complex 6	8 826	6,36
Rich-hollow complex 7	3 758	2,71
Sedge-shpagnum fen	10 240	7,38
Sedge-shpagnum fen 2	2 134	1,54
Total area	138 824	



Map of Net Primary Production for “Bakcharskoe bog”

Average area weighted NPP
=272 g/m²



Thank you for the attention!