

**THE USING OF BIOLUMINESCENT
ANALYSIS FOR ECOLOGICAL
ESTIMATE OF ATMOSPHERE
OF KRASNOYARSK**

O.V. Admaev,

**V.V. Zavoruev, S.V. Kovtun
ICM SB RAS (Krasnoyarsk)**

THE PURPOSES:

I. To estimate an ecological condition of an atmosphere of city of Krasnoyarsk by means of the bioluminescent analysis

1. City and its vicinities

2. Microdistrict of city

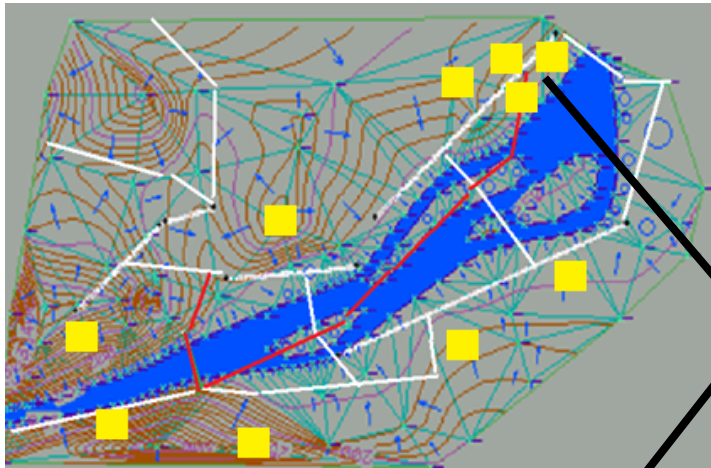
II. Estimation of emissions of a transport stream for separate microdistrict of city

Gratitude:

Institute of Biophysics, Siberian Branch of Russian Academy of Sciences, Department of Biotechnology, Akademgorodok, 660036, Krasnoyarsk, Russian Federation.

Curator of collection Dr. E.K.Rodicheva Email: ccibso@ibp.ru <<mailto:ccibso@ibp.ru>> Web site: [//www.ibp.ru/collection/default.phpl](http://www.ibp.ru/collection/default.phpl) <<http://www.ibp.ru/collection/default.phpl>>

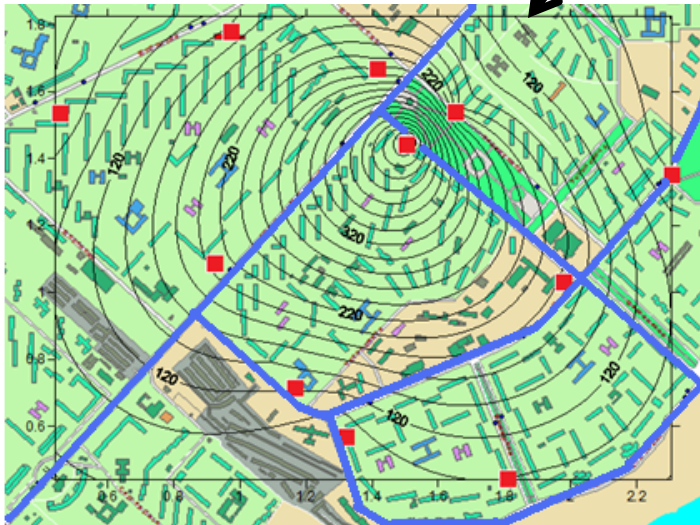
The basic highways in Krasnoyarsk



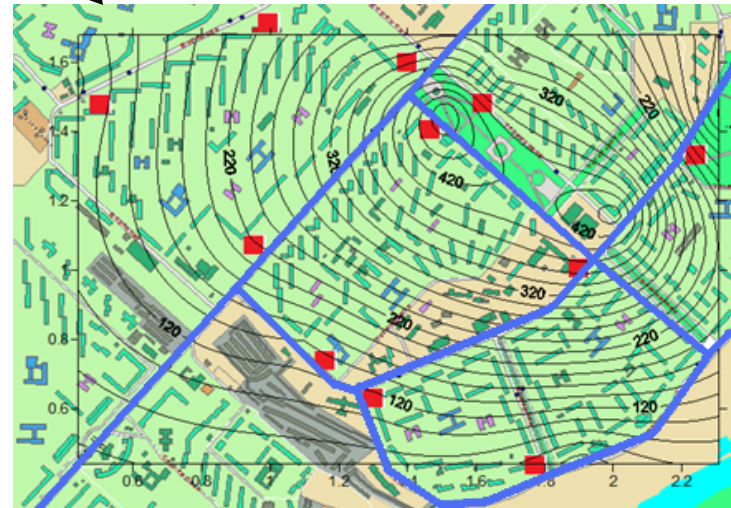
  - Items of sampling of snow

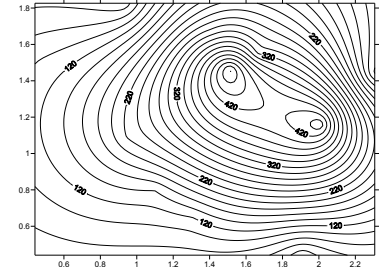
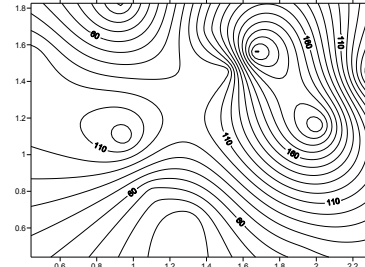
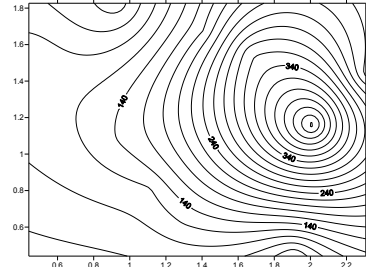
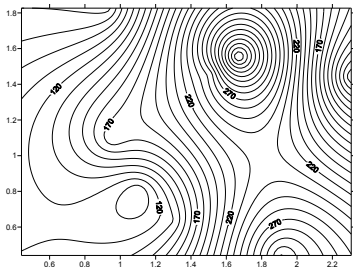
**MICRODISTRICT
“ZELENAYA ROSCHA”**

E. Coli

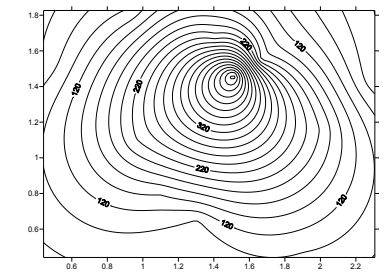
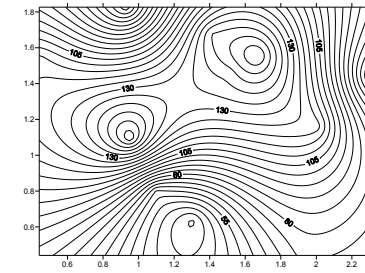
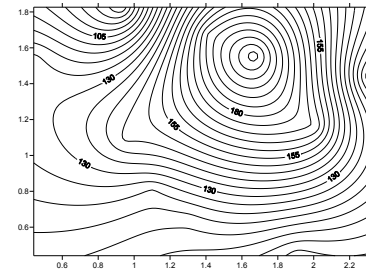
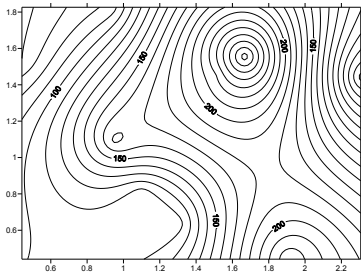


Phosphoreum

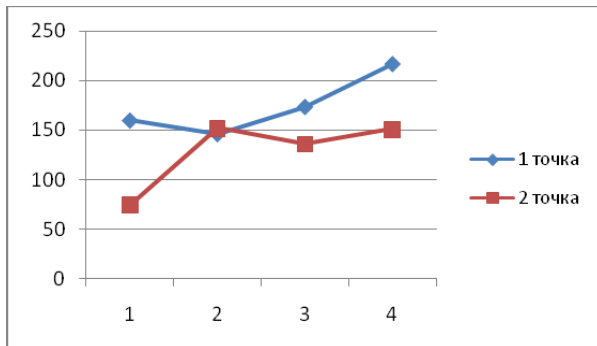




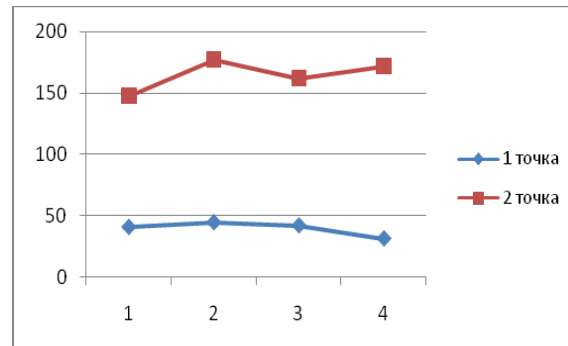
Lines of a level of a bioluminescent index depending on time (Phosphoreum)



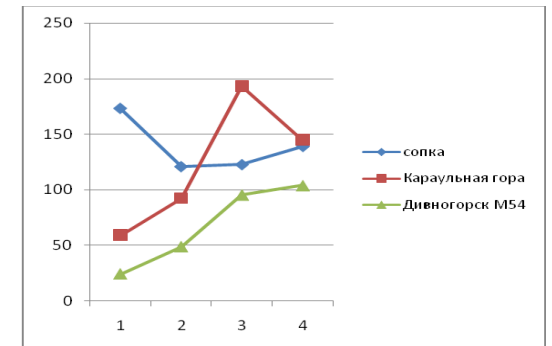
Lines of a level of a bioluminescent index depending on time (E. coli)



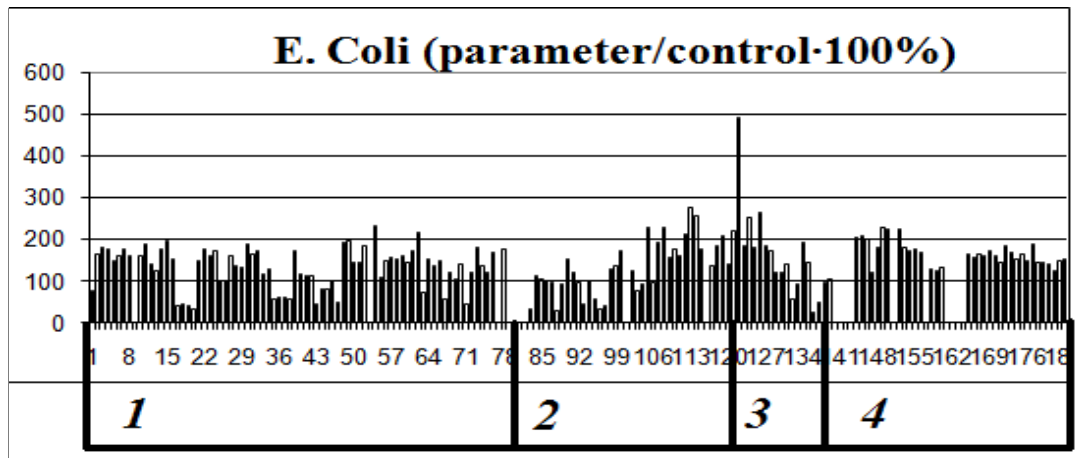
Palace of Work



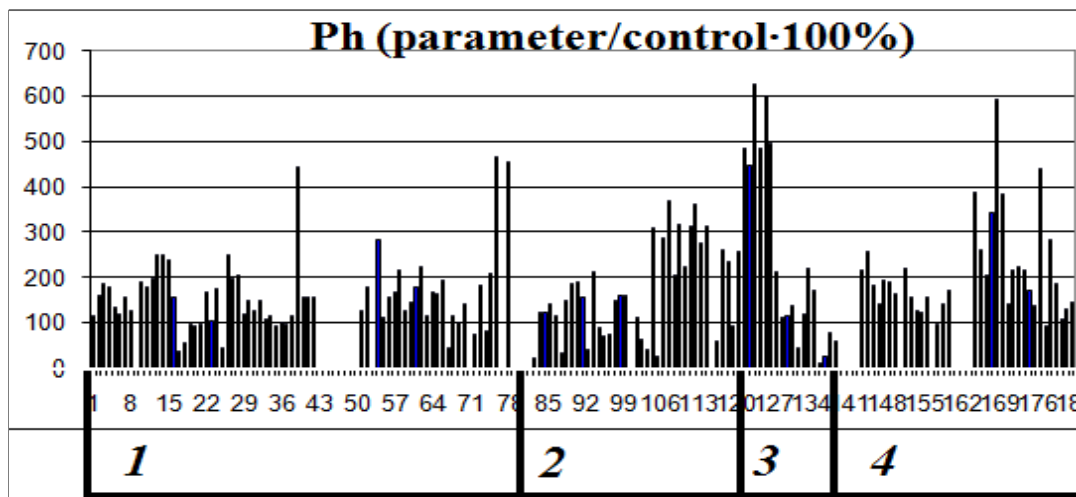
Street on May, 9th (Northern)



E. coli



- Calculation of a bioluminescent index for bacteria E. Coli and Phosphoreum for :**
- 1 - microdistrict Northern (1-80)**
 - 2 - coast of Yenisei (81-120)**
 - 3 - Guard mountain and the Nikolaev hill (high points 121-135)**
 - 4 - Divnogorsk and road along Yenisei (136-183)**



Thanks for attention!